

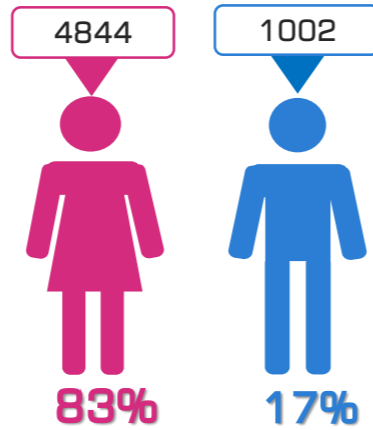
**ATTENDANCE STATISTICS OF PRECINCT ELECTION COMMISSIONS' MEMBERS AT THE I STAGE OF TRAININGS  
TRAINING FOR THE HEAD OFFICIALS OF PRECINCT ELECTION COMMISSIONS (CHAIRMAN, DEPUTY CHAIRMAN), SECRETARY)  
WHERE POLLING IS CONDUCTED USING ELECTRONIC TECHNOLOGIES  
BASED ON DATA RETRIEVED DURING THE TRAININGS**

**ATTENDANCE RATIO IN TERMS OF GENDER**

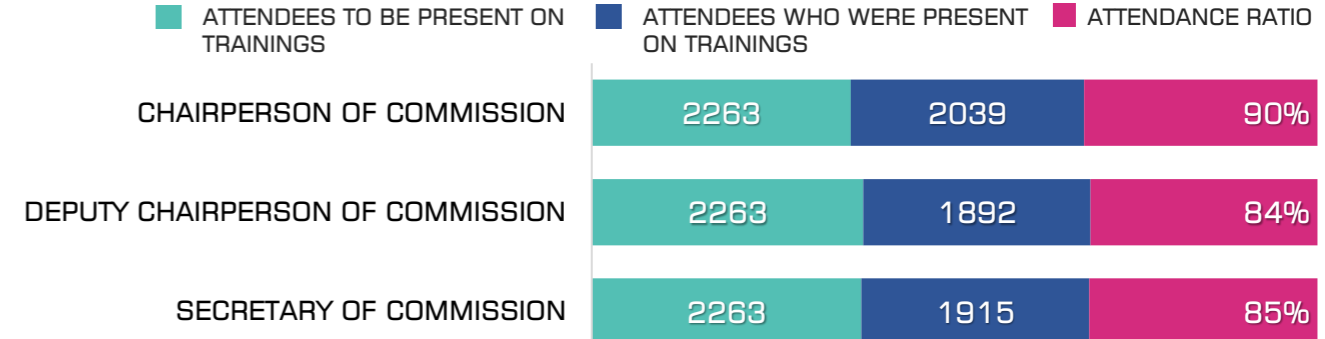
**ATTENDEES TO BE PRESENT ON TRAININGS** 6789

**ATTENDEES WHO WERE PRESENT ON TRAININGS** 5846

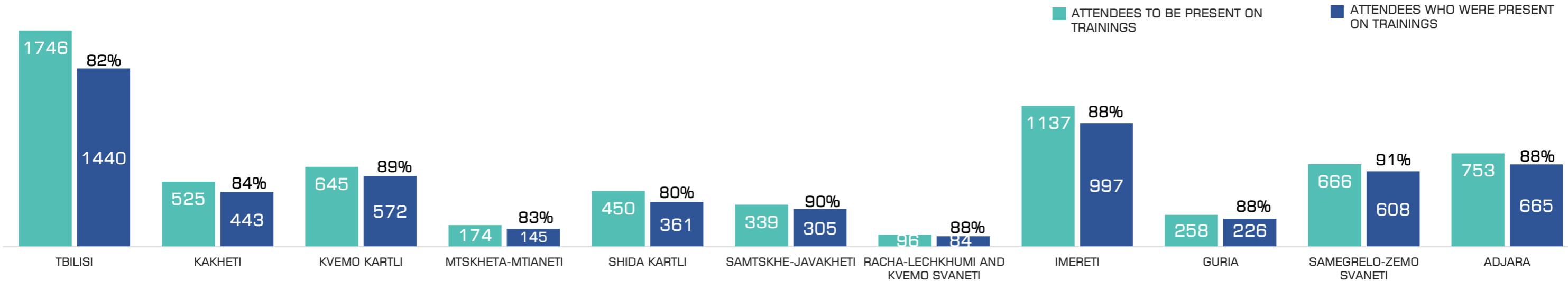
**ATTENDANCE RATIO** 86%



**ATTENDANCE STATISTICS DUE TO THE HEAD OFFICIALS**



**ATTENDANCE STATISTICS ACCORDING TO THE MUNICIPALITIES/REGIONS AT THE I STAGE OF TRAININGS**



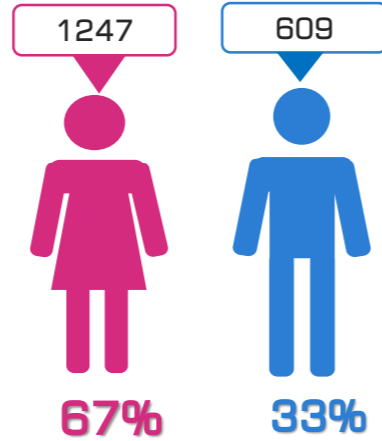
**ATTENDANCE STATISTICS OF PRECINCT ELECTION COMMISSIONS' MEMBERS AT THE I STAGE OF TRAININGS  
TRAINING FOR THE HEAD OFFICIALS OF PRECINCT ELECTION COMMISSIONS (CHAIRMAN, DEPUTY CHAIRMAN), SECRETARY)  
WHERE POLLING IS CONDUCTED WITHOUT USING ELECTRONIC TECHNOLOGIES  
BASED ON DATA RETRIEVED DURING THE TRAININGS**

**ATTENDANCE RATIO IN TERMS OF GENDER**

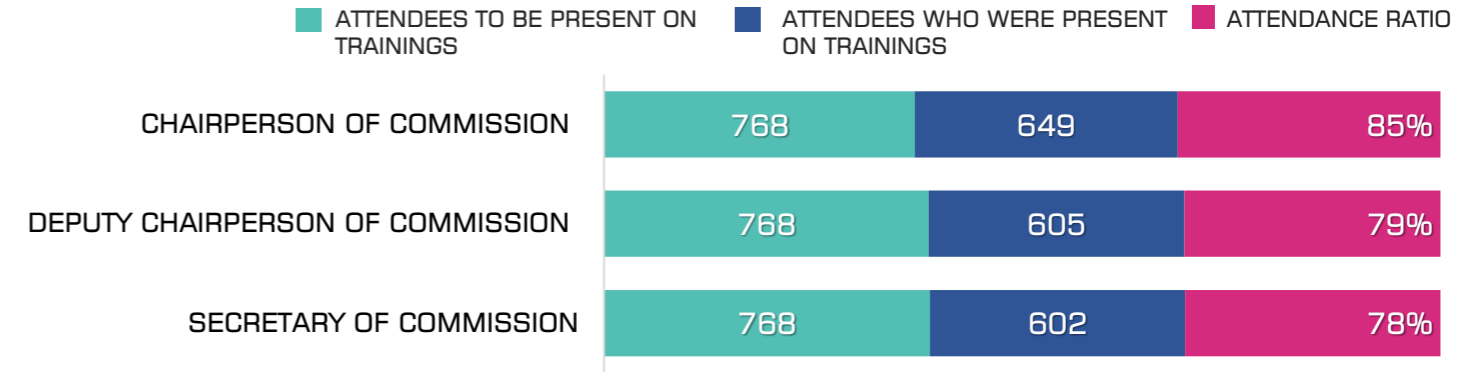
ATTENDEES TO BE PRESENT ON TRAININGS **2304**

ATTENDEES WHO WERE PRESENT ON TRAININGS **1856**

ATTENDANCE RATIO **81%**



**ATTENDANCE STATISTICS DUE TO THE HEAD OFFICIALS**



**ATTENDANCE STATISTICS ACCORDING TO THE MUNICIPALITIES/REGIONS AT THE I STAGE OF TRAININGS**

